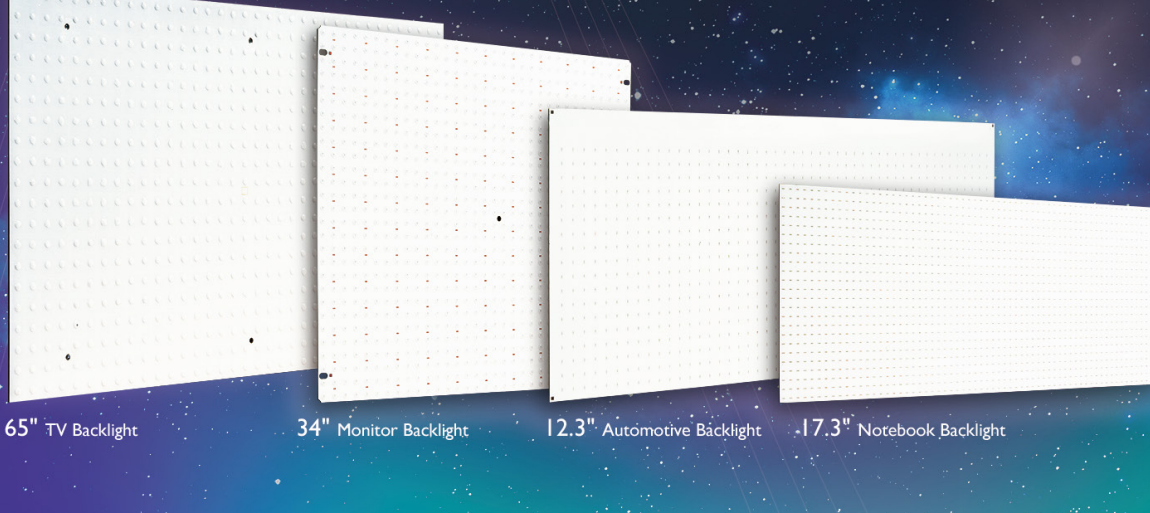


Mini LED is the Future

Lextar presents the full series of COB-type I-Mini Blue backlight modules



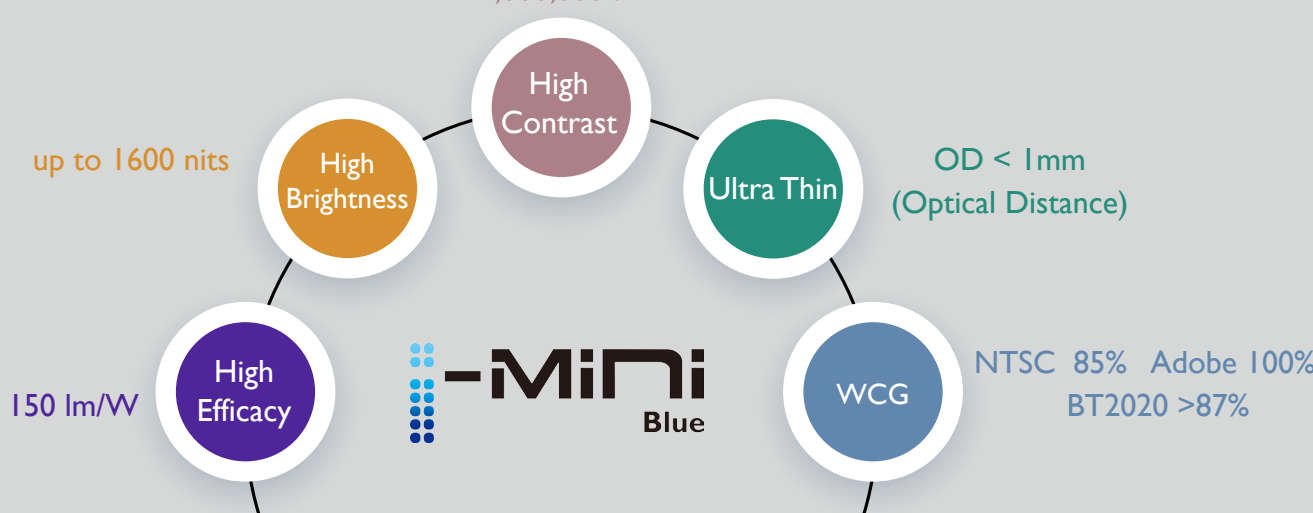
65" TV Backlight

34" Monitor Backlight

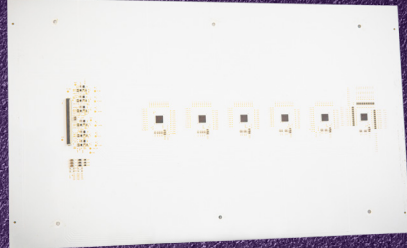
12.3" Automotive Backlight

17.3" Notebook Backlight

The Key Features of Lextar I-Mini Blue



Lextar I-Mini Blue Technology Highlights



DOB – Driver on Board

- Quick assembly - compact design for easy panel assembly
- Ultra thin panel - leaving space for panel mechanical design
- Best for multi-zone backlight solution



Partial Coating

- Superb optical design – excellent uniformity
- Enhanced brightness – reflector can be embedded
- Suitable for large size panel
- Seamless backlight design

2020
LEXTAR

I-Mini Blue for 12.3" Automotive Display (DOB solution)

- High Brightness (Module >1200 nits)
- Local Dimming (>360 zones)
- Wide Color Gamut (NTSC >90%)
- High Reliability (85°C 50,000 hrs)



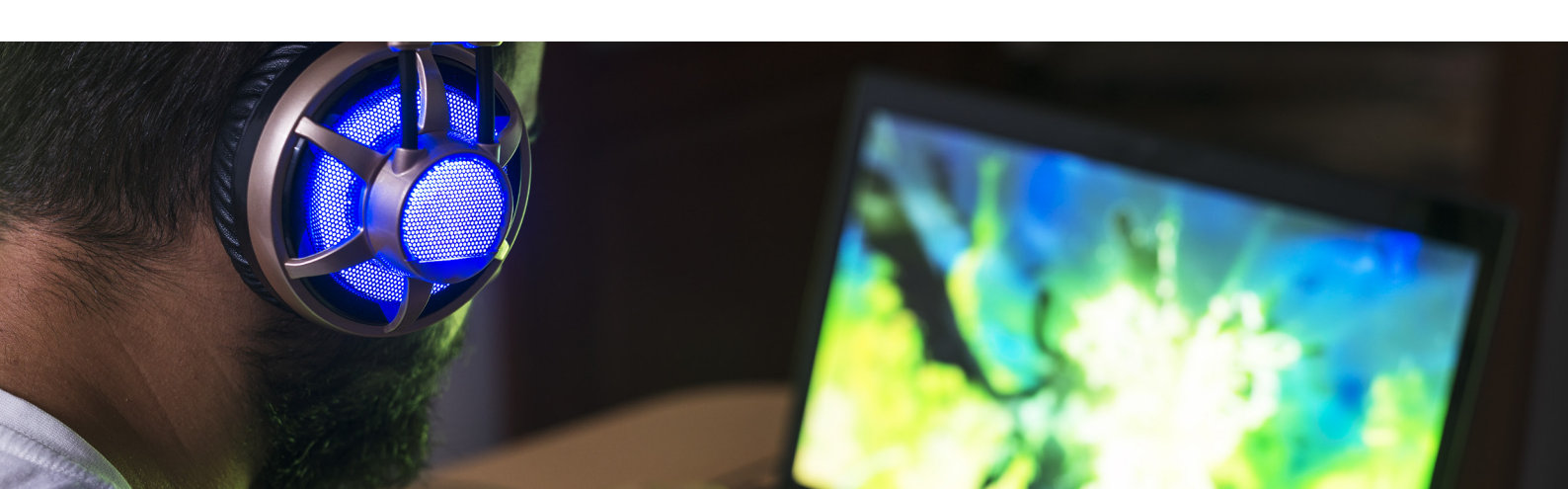
Application	12.3" Automotive Display
Module Brightness (nits)	1600
OD(mm)	3.5
Chip Quantity / Set	~1500
Local Dimming Zones	>360
Chip Size(mil)	1515

2020
LEXTAR

World first mass produced COB-type Mini LED backlight

I-Mini Blue for 17.3" Notebook Display

- High Brightness (Module > 1000 nits)
- Thin Design: OD = 0
- Local Dimming (>200 zones)
- Wide Color Gamut DCI-P3 100%
- 4K + QD solutions

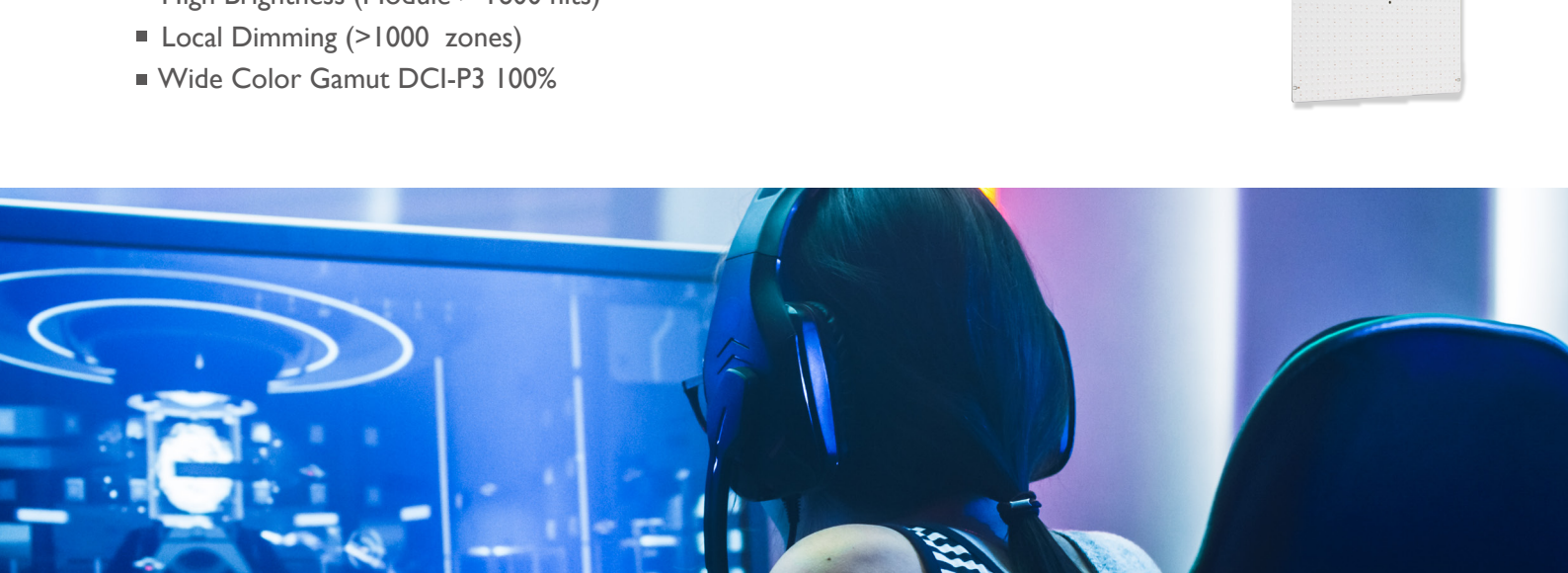


Application	17.3" Notebook Display (UHD model)
Module Brightness (nits)	1000
OD(mm)	0
Chip Quantity / Set	~5500
Local Dimming Zones	>200
Chip Size(mil)	0812

2020
LEXTAR

I-Mini Blue for 34" Monitor Display

- Partial Coating Technology
- High Brightness (Module > 1600 nits)
- Local Dimming (>1000 zones)
- Wide Color Gamut DCI-P3 100%

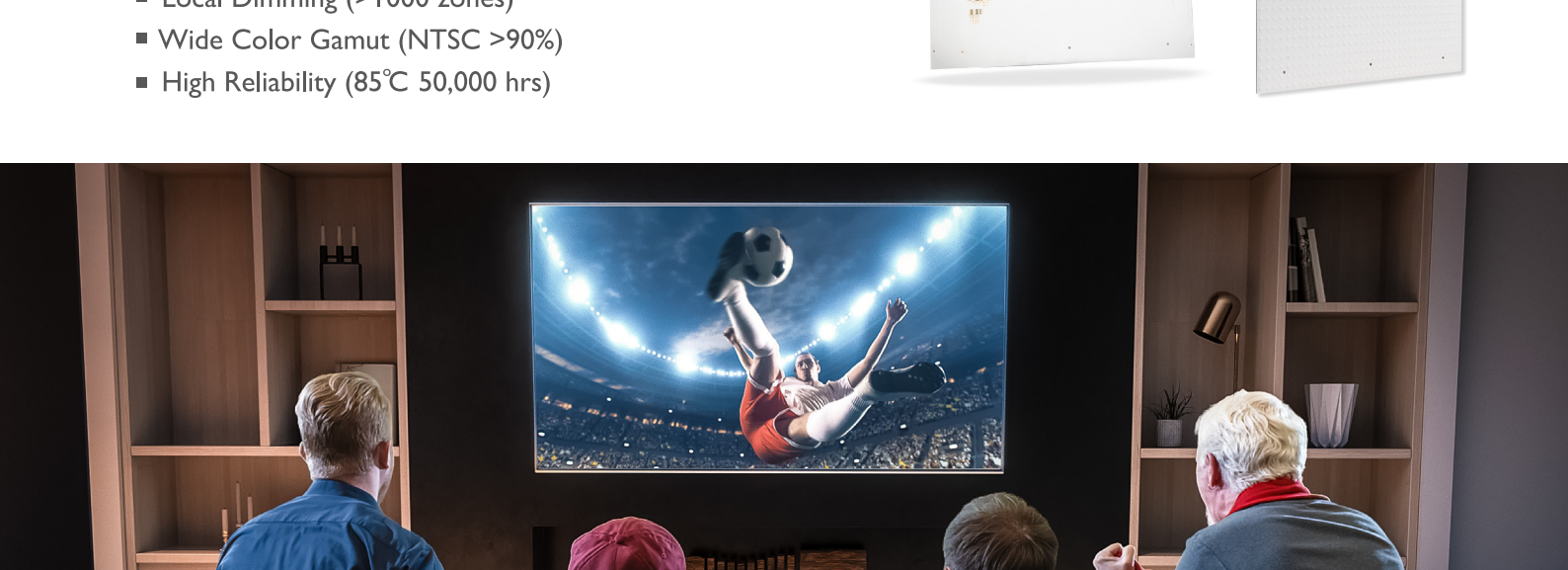


Application	34" Monitor
Module Brightness (nits)	1600
OD(mm)	2
Chip Quantity / Set	~7500
Local Dimming Zones	>1000
Chip Size(mil)	1515

2020
LEXTAR

I-Mini Blue for 65" TV (DOB solution)

- Partial Coating Technology
- High Brightness (Module > 1000 nits)
- Local Dimming (>1000 zones)
- Wide Color Gamut (NTSC >90%)
- High Reliability (85°C 50,000 hrs)



Application	65" TV
Module Brightness (nits)	1000
OD(mm)	5
Chip Quantity / Set	~20000
Local Dimming Zones	>1000
Chip Size(mil)	1515